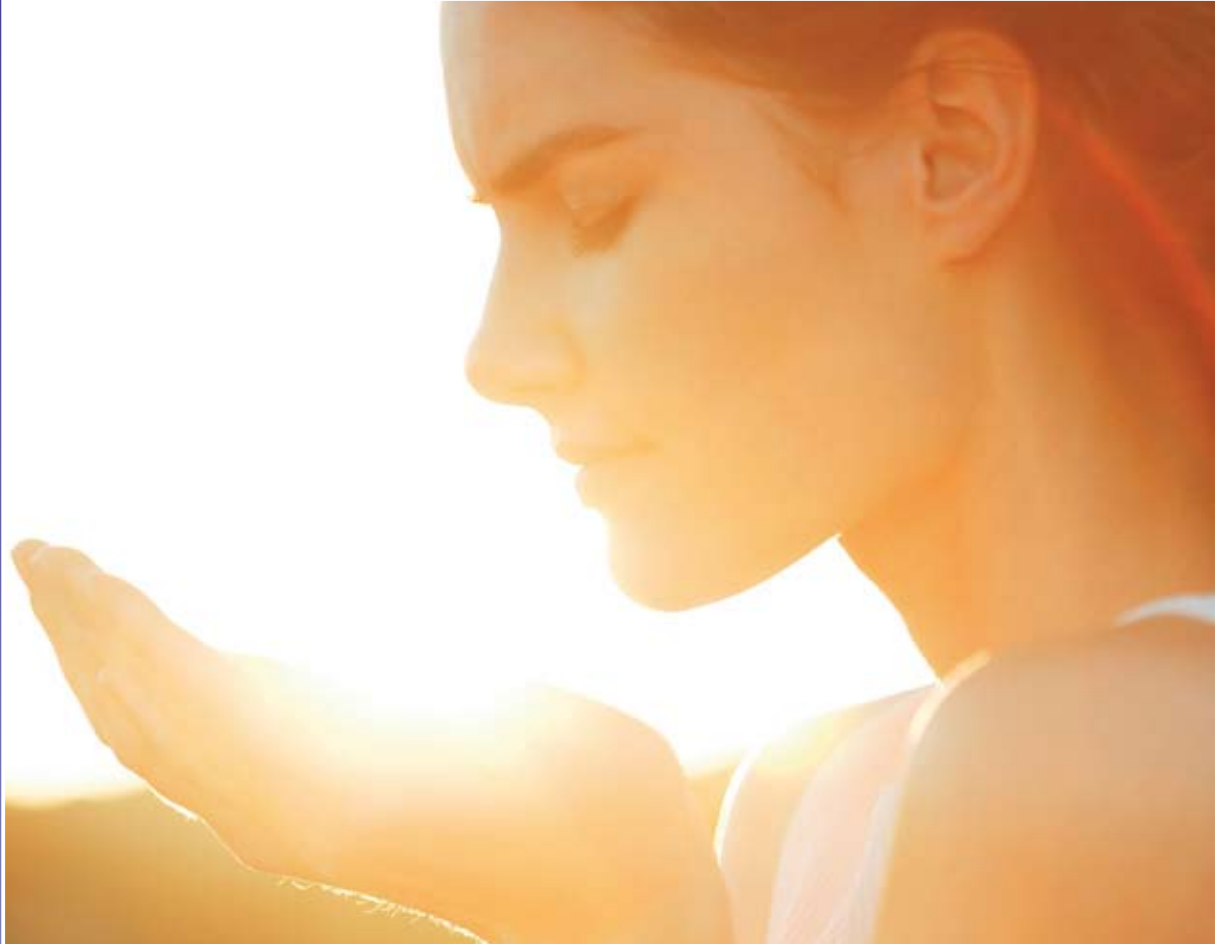


The light solution



Lucy

LED Headlamp System

LED Headlamp System *Lucy*

Smaller, lighter, more flexible – brighter!



Granted the iF
Design Award
2008

Small and flexible,
Lucy fits in one hand.



Ergonomic handling



Refined LED technology eliminates generation of heat at the tissue being examined.

- ❑ Low maintenance costs and minimum operating costs (no exchange of illuminant necessary, no use of lightguide cables).
- ❑ Maximum freedom of movement and functionality.
- ❑ Haptically distinguishable operating buttons.
- ❑ Single-handed swivel and adjustment of the lamp unit.
- ❑ LED lamp switched on and off with one hand when the unit is swiveled in and out (see Fig.).

Optimum alignment



Two different LED beam directions guarantee ideal investigation conditions.

- ❑ Direction of view straight: for applications where the patient is at eye-height.
- ❑ Direction of view downward: for applications with patients lying down

Modular system

The modular LED Headlamp System *Lucy* from R.WOLF allows any user to put together their own, individually optimized system.

The lamp's fully flexible fabric headband adapts to the individual shape of the user's head and offers maximum wearing comfort with minimum weight. The breathable fabric ensures perfect dissipation of heat and moisture, and is maximally skin friendly (free of latex and adhesive).

An unrivalled small lamp unit – positioned directly between the eyes of the user – achieves optimum illumination of even deep cavities with the coaxial alignment of illumination and observation path. The integrity of the user's field of view is virtually complete.

Long-life batteries



The Lithium-Polymer batteries guarantee the maximum energy density currently available. Maximum operating time with minimum size/weight.

- Optimum freedom of movement with variable fixing options.
- Fast, simple battery change with one hand.
- Visual charge status display, acoustic battery-change alarm.

Lucy – Flexibility is a top priority

Headband versions

Disposable headband
4606000



Breathable textile headband
4606200

In addition to the breathable textile headband, R.WOLF also supplies extremely hygienic and cost-effective disposable headbands for all applications requiring new headbands (20 disposable headbands in one set, 1 fixing pad).

Semiflexible plastic forehead strap with and without head bracket

64056016*



64056015*



* Supplied without lamp unit

Range of battery units

small, 1320 mAh
4604050

large, 2640 mAh
4604060



Power pack battery adapter
4601000

Extension cable + clip complete 4605000

For positioning the battery on the user's belt or jacket pocket.



LED Forehead Lamp System *Lucy*

Basic sets with flexible headband

Batteries*

2 units
small



2x
4604050

5

2 units
large



2x
4604060

6

LED heads

Direction of view
straight



4608008

8

Direction of view
downward



4608009

9

Headband, flexible



4606200

Included in the basic set

Charging unit



4602000

LED head mount



64219051

Battery holder complete



4603000



64007121

46002 **7** → Order no.

* Only one battery is supplied with each individual order, two batteries are only supplied when a Lucy Basic Set is ordered.

Basic sets with semiflexible forehead straps

Batteries

2 units
small



2x
4604050*

5

2 units
large



2x
4604060*

6

LED heads

Direction of view
straight



4608008

8

Direction of view
downward



4608009

9

Forehead strap semiflexible

without
head bracket



64056015

8

with
head bracket



64056016

9

Included in the basic set

Charging unit



4602000

Battery holder complete



4603000



64007121

46001 → Order no.

* Only one battery is supplied with each individual order, two batteries are only supplied when a Lucy Basic Set is ordered.

Optional accessories

Extension cable + clip complete

4605000 (Pic. see page 3)

Disposable headband

4606000 (Pic. see page 3)

Power pack battery adapter

4601000 (Pic. see page 3)